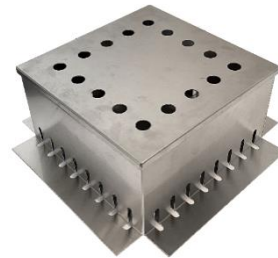


DRAIN BOXES (Inspection chambers)

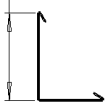
Specs:

- Manufactured in .063" mill finish aluminum.
- Standard sizes 12"x12", 15"x15", 24"x24" and 30"x30"
- Available in 4", 6", 8" and 10" heights. Custom dimensions and thickness of metal upon request.
- Standard slot dimensions .375" x 2"
- Can be purchased with or without lid depending on the application.
- Also available in stainless steel and Corten steel.



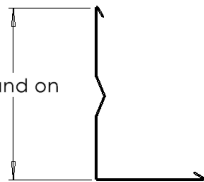
Drain bar profiles

4" up to 7 7/8"

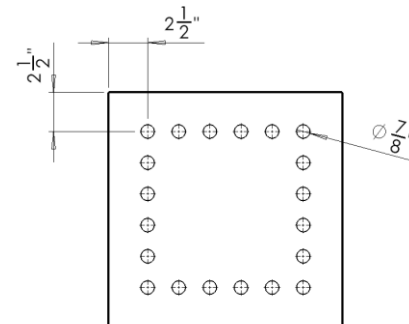


TYP profile for sizes up to 7 7/8" tall

8" and on



TYP profile for sizes over 8"



Cinnamon Metals
7809 Loisdale Road
Springfield, VA 22150
703-206-8718

Drain Box

info@cinnamonmetals.com

Date: 8/30/2023

Drawn by: JH

Approved by: CC